

Pumping Power That Fits Every Need

Concrete pumps come in all shapes and sizes, in order to meet your job requirements. From stationary to truck-mounted boom pumps, and their related technologies, these machines are the workhorse on the jobsite.



Compact power boom

Able to pump 300 cu. yds./hr., the SY5650THB72 truck-mounted concrete pump features a special five-section, 236-ft. (72-m.) boom. Its six-axle chassis is only 56.6 ft., ideal for small sites. The pumping system includes a remote control that offers precise extension and operation of the boom. A larger fuel system and tank capacity provides longer running times, requiring less refueling and downtime. Sany America. 877-726-9318. www.sanyamerica.com.

Z-fold boom pump

Featuring a Z-fold design for increased placement options, the ZLJ 40X-4Z 40-m. boom pump's X-style outriggers provide stable support and fast setup. Equipped with a lightweight, programmable wireless remote control, an LED display delivers feedback through two-way communication. Rexroth Hydraulic pumps and Stiebel PTO create a smooth and quiet pumping operation. Daily maintenance is simplified with the automatic greaser and quick change-out, two-piece-style mud caps. CIFA USA Inc. 877-243-2345. www.cifausa.com.





Selection and Performance

The leading manufacturer of internal concrete vibrator products

 EZ Mix	 Flexpoint
 High Cycle	 Optimal Finish

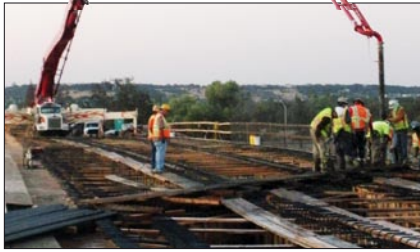
Concrete Vibrators






Visit our website today for complete product specifications and features.
www.wycoetool.com

Wyco Tool, 8535 Washington Avenue, Racine, WI 53408-3701 USA TEL Fone: 800-823-8826 • 262-938-8770 • Fax: 888-883-8872 • 262-938-8321



Traction system adds power

The Addidrive system, featured on the 70Z truck-mounted concrete boom pump, is a front-drive system that provides more than 12,000 lbs. of traction force to the tractor steer axles, offering a 10x10 drive configuration. The system offers uphill traction and off-road driving while consuming less fuel and weighing 900 lbs. less than a traditional front-drive. In addition, the truck's turn radius is maintained and the unit doesn't require a spacer frame allowing cab height to remain the same. Putzmeister America Inc. 800-884-7210. www.putzmeister.com.

Four-section boom

With a top outlet rate of 130 cu. yds./hr., the Extreme 4ZR21 pump features a four-section boom that gives it a vertical reach of 67 ft. and maximum horizontal reach of 54 ft. Features include radio and cable remote controls, two water pumps, and 12-ft. end hose. Sermac America Inc. 651-429-8991. www.sermacameria.com.

Powerful shotcrete pump

The Cyclone gunite machine sprays dry-mix gunite material, powered by an air motor that pushes the material through a hose at a high velocity. The machine conveys materials up to 1000 ft. horizontally and 300 ft. vertically. Applications include drainage ditches, tunnels, retaining walls, pools, and rockscapes. Gunite Supply & Equipment. 888-321-5526. www.gunitesupply.com.



Reconditioned pumps with warranty

Schwing Select reconditions pre-owned concrete pumps. After a review of its service history, inspection, and recondition process, a previously owned pump becomes a certified Schwing Select pump and is available for re trucking. These pumps come with a three-year or 3000-hr. warranty. Schwing America. 888-724-9464. www.schwing.com. **CC**

For more information, visit www.concreteconstruction.net/freeinfo.

ZIM-MIXERS®
NO NEED TO COMPROMISE

The Only Mobile Concrete Mixer Tough Enough to Live Up to Your Standards!

- ✓ Control Your Schedule
- ✓ Eliminate Waste
- ✓ Increase Profit

CALL FOR A FREE VIDEO

WATER

ZI Zimmerman Industries, Inc.
Ephrata, PA USA • Phone: 717-733-6166 • 888-576-6499
www.zimmermanindustries.com

For more information, visit www.concreteconstruction.net/freeinfo